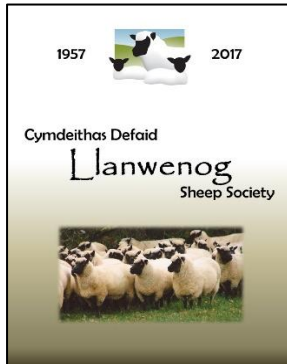


**NEWSLETTER SPRING 2019**  
**CYLCHLYTHYR GWANWYN 2019**



**Hopefully with this nice weather we have been having, Lambing has/is going well with you this year. We just have to hope that this is not the start and the end of our summer for this year!**



2018 was a busy year for the Society with the Society celebrating its 60<sup>th</sup> year which was recorded with the launch of the Commemorative Book. The Book will be available at events throughout the year for £5 or can be posted to you for £6 to cover postage costs. The Book is certainly worth a read and is also a handy reference book on the breed. If you wish to order a copy, please contact the Secretary.

**Officials 2019**

**President:** Mr Gareth Evans, Parcyrhos Flock  
**Vice-President:** Mrs Maggie Wilson, Pessall Flock  
**Chairman:** Mr Steffan Davies, Bryndolau Flock  
**Vice Chairman:** Mr Gareth Lloyd, Cletwr Flock  
**Treasurer:** Mrs M A Williams, Iet Goch Flock

The Society has booked the Breed Society's stand for the Royal Welsh Spring Festival on the 18<sup>th</sup> and 19<sup>th</sup> May 2019 and we are looking for Members to assist on the stand over the two days. Over the last few years, only a handful of Members have been assisting, meaning the stand is left empty for periods of time. An empty stand does not generate new members/buyers to the breed. We would be grateful if you could spare some time to assist looking after the stand during the weekend.

**\*\*\* 2019 Flock Visit \*\*\***  
**Saturday 9<sup>th</sup> November 2019**  
**By kind invitation of the**  
**Penrherber Flock (480)**

# SOCIETY'S COMPETITIONS

Don't forget the Competitions that the Society hold during the year. They are listed below together with the rules and requirements. There is something for everyone from the Photography Competition, with the possibility of your photo being used in the Society's calendar, to a bit of additional friendly competition in the showing. Or for the more serious breeders, why not try the Flock Competition!

## **FLOCK COMPETITION RULES**

This competition is divided into large and small flock sections. The dividing line for this competition is 55 females. In this competition only pure-bred ewes to be covered by registered Llanwenog rams are eligible for consideration and the flock must contain a minimum of 15 females, 20% of the total females must be ewe lambs retained for breeding.

New members are not eligible to compete in this competition during their first year of membership.

## **FLOCKMASTER**

This competition is available to all members exhibiting stock in dedicated Llanwenog show classes with a recognised Llanwenog Judge. Points are awarded for Breed Champion, 1<sup>st</sup>, 2<sup>nd</sup>, and 3<sup>rd</sup> places as follows:-

- 1<sup>st</sup> - 3 points
- 2<sup>nd</sup> - 2 points
- 3<sup>rd</sup> - 1 point
- Champion - 2 points

The points are added up at the end of each show season and the winners are announced at the Society's AGM dinner in November.

## **LAMBING COMPETITION**

The Llanwenog is a prolific breed and lambing percentage figures are a clear indication of performance. Each year members are invited to enter this competition and are required to provide details of:-

- Number of pure-bred Llanwenog ewes put to a Ram (any breed)
- Number of lambs reared - audit date being 1st June

2015 Revised Rules:-

- Ram can be pure or any breed
- Small Flock - 30 ewes and under (min 5 ewes)
- Large Flock - 31 ewes and over
- Lambing Percentage must be 160%
- Ewe Lambs and their Lambs do not count

NOTE: Lambs already sold qualify providing proof can be produced (such as Butcher's/Auctioneer's pay slip)

### WHITEPARISH SHIELD

This is a similar competition to the Flockmaster however, it is for members exhibiting stock in non-dedicated Llanwenog classes eg. Any Other Breed. At the end of the show season, send your completed form to the Secretary.

### PHOTOGRAPHY COMPETITION

Each year we run a competition to encourage members to contribute photos of their flocks on farm and in the show ring. The winning photos of each category are featured in the Llanwenog Calendar and an overall 'Llanwenog Photo of the year' winner is announced at the Society AGM (early November).

The following categories are judged:-

Llanwenogs Through the Seasons - Llanwenog sheep in all weathers  
Flocks in the Field - Capture the very essence of the Flock  
Tupping Time - Catching the mood and atmosphere of the Autumn months  
Lambing Time - Demonstrating the fund and life of Spring and new-born lambs  
Show Time Llanwenog - Primed and ready for Show Llanwenogs

Images in Landscape format reproduce best in the calendar. Entries should be sent to the Secretary clearly marked with the category, flock name and details of the sheep. Photographs can only be accepted in 'jpg' format. In entering, the photographer gives permission for the Society to use the photograph for Society publicity materials eg the calendar and web site and where possible we will provide photo credits providing a bit of extra publicity for your flock.

### SHOW AND SALE RULES

- All sheep can be sold one at a time, however, they can only be shown in pairs
- Prizes will only be given to the top three
- All sheep will be sold in catalogue order. Prize winners will no longer be moved
- If you sell in the top three in this year's Show and Sale then you will not be eligible to be in the top three the following year.
- Best Turnout Pens would be for Ram, Pairs and Group of 5's - Rosette for each section.  
Overall Cup Best Turnout Pen
- A Young Handler's age is any child up to school year 6 i.e. not started secondary school yet and then year 7 to 11.
- Best Turnout Pens would be for Ram, Pairs and Group of 5's.
- Rosette for each section, Overall Cup Best Turnout Pen

**\*\*\* 2019 Show and Sale \*\*\***

**Saturday 24<sup>th</sup> August 2019**

## **COMMUNICATION**

Communication will continue to be mainly via Email in order to keep costs down and those receiving by Email will also receive additional informative Emails as and when, and reminders. Those who have opted for 'post' only will only receive key society information. If you have an Email address that you would like us to use, then please advise the Secretary.

## **FLOCKMASTER QUALIFYING SHOWS**

18 <sup>th</sup> – 19 <sup>th</sup> May 2019	Royal Welsh Spring Festival Show
14 <sup>th</sup> – 16 <sup>th</sup> June 2019	Three Counties, Malvern Show
6 <sup>th</sup> July 2019	Monmouthshire Show
6 <sup>th</sup> August 2019	Lampeter Show
13 <sup>th</sup> July 2019	Tivyside
22 <sup>nd</sup> – 25 <sup>th</sup> July 2019	Royal Welsh Show
3 <sup>rd</sup> August 2019	Cardigan County Show
3 <sup>rd</sup> August 2019	Caerwedros
10 <sup>th</sup> August 2018	Cwmsychbant
17 <sup>th</sup> August 2018	Gorsgoch
7 <sup>th</sup> September 2018	Llandysul Show

## **2019 IMPORTANT DATES**

1 <sup>st</sup> June 2019	Lambing Competition
31 <sup>st</sup> July 2019	Show & Sale Entries Ram Registrations for Official Sale
24 <sup>th</sup> August 2019	Show & Sale – Llanybydder
31 <sup>st</sup> August 2019	Photography Competition
1 <sup>st</sup> September 2019	Flock Competition Working Committee Re-Election
30 <sup>th</sup> September 2019	Flock Master & Whiteparish Results
1 <sup>st</sup> October 2019	Membership Renewal 2019/2020
25 <sup>th</sup> October 2019	Flock Return Ram Registrations
9 <sup>th</sup> November 2019	Attendance at Flock Visit & AGM & Dinner
30 <sup>th</sup> November 2019	Flock Visit & AGM & Dinner Ewe Lamb Registrations

## LLANWENOG SHEEP BREEDERS SUPPORT GROUP

When the Llanwenog Sheep Society first started it was solely based in Wales, more precisely in West Wales. However, when the breed started to be exported over the border into England, many years ago, the Llanwenog Sheep Breeders Support Group was set up to assist and support the Members in England and ran alongside the main Society. Moving forward into 2017, and with the introduction of Emails, it is easier to communicate with Members further afield, however, the physical distance is still an issue, therefore, the Llanwenog Sheep Breeders Support Group still exists with the same aim and organises and attends events in England. There is a small nominal membership fee of £5. The Chairman also sits on the Society's Working Committee and takes to the meetings any issues, suggestions or queries from their members.

Due to various factors this year, the Committee doesn't have many Members and are asking for assistance. They are looking for assistance to help cover the following events:-

- 5<sup>th</sup> June            North Sheep, Frankland Farms, Rathmell, Settle, North Yorkshire, BD24 0AJ. Help needed to talk to people who visit the stand, provide sheep for the stand as well as set up and take down.
- 16<sup>th</sup> June            Royal Three Counties Rare & Minority Breed Show – help with manning the show stand and talking to people about the breed.
- 18<sup>th</sup> June            Sheep South-West, Southcott, Burrington Devon, EX37 9LF. The Chairman will be providing the sheep and manning the stand so if you are able to assist, please visit him.
- 13<sup>th</sup> September    Melton Mowbray Rare Breed Show & Sale. We need a Judge and possibly an Inspector.

***If you require any further information, please contact Alison Ayling of the Clover Flock 423 on llanwenogsg@gmail.com***

As usual, a request for your news, results is much appreciated. We can only produce interesting Newsletters and Flock Book's if we have something to put in them – therefore if you have done something with your Llanwenog sheep and got some great results, or even if it didn't work out – please let us know.

If you are attending Shows or events this year and require leaflets to hand out, please contact the Secretary who will post some out to you. If you are attending events where the Society has a stand, we would be grateful for your assistance in manning the stand for a period.

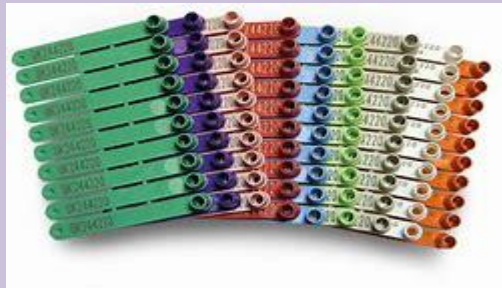
## SHEEP EAR TAGGING SYSTEM 2019

### Member Number/the Year/last five digits of the EID tag number

Therefore, Flock Number 1 will register this year's lambs as:

**1/19/12345**

Although it would be preferred if all registered sheep had this quoted on their tags, as it makes it easier for Members, especially new members, to identify the sheep. However, it has become apparent that many Members do not include their Member Number and the prefix on their tags and the Working Committee have agreed that it is not compulsory. However, when completing your Ewe or Ram Registration forms, all of the above need to be included.



## NEW MEMBERS

Flock No	Prefix	Name	Location
531	Windmill	Ms Rachel Emerson	North Yorkshire
532	Francis House	Mr J P Squire	Cambridge
533	Elin	Mrs Helen Hall	Ceredigion
534	Mali	Ms Molly Fosgate	Kent
535	Tewellers	Mr & Mrs S Keeping	Oxon
536	Moelifor	Messrs Davies	Ceredigion
537		Mrs S F Austin	Oswestry
538		Mr Elis W Trigg	Ceredigion
539		Mr & Mrs K & S Hutchings	Cornwall
540	Langlands	Mr G R Barnett	Somerset
541	Croftwood	Mr Rhys Dobbs	Hampshire
542		Mrs Anne Seagroatt	Banbury
543	Lower Nex	Ms Helen Spittle	Chepstow
544	Lle Hyfryd	Mrs M L Graham	Carmarthenshire

## TREVOR KELLAND BURSARY – BRIDGWATER COLLEGE

Grace Whitcombe received the Bursary for 2018 and her topic was “*Researching the suitability of Llanwenog sheep as a dam of a Mule Ewe when crossed to Bluefaced Leicester*” and also “*Exploring ‘easy-care’ systems and the performance of the Llanwenog breed as a terminal sire in relation to other recognised sires*”.

### Results

#### Texel Lambing Results

Scanning %	Lambing %	Turn-out %	Selling %
180%	160%	150%	150%

#### Charolais Lambing Results

Scanning %	Lambing %	Turn-out %	Selling %
220%	200%	180%	180%

#### Llanwenog Mule Lambing Results

Scanning %	Lambing %	Turn-out %	Selling %
185%	180%	175%	170%

The results obtained above prove how impressive the Llanwenog mule is, each ewe rearing over a lamb and a half. The comparative results above show data from Charolais and Texel rams breeders; not commercial flocks. The flock husbandry and attention to detail with the Charolais and Texel flocks would be to a very high standard as shown in the figures. Whereas, the bigger, commercial flocks would not have as many man hours to dedicate per ewe. On a commercial fat lamb producer's business, the figures from the ram breeders would vary as their production would be on a larger scale.

To read the full report please visit our website

[https://llanwenog-sheep.co.uk/images/2018\\_Bursary\\_Results.pdf](https://llanwenog-sheep.co.uk/images/2018_Bursary_Results.pdf)



### **Members Only Facebook Page**

One of the common requests from the responses to our questions in last year's Flock Return was to have a type of 'Members/Forum' Page. We have therefore set up a Group on the Society's Facebook Page which will be for Members of the Society only. If you have any questions or require advice or assistance, then you can post it here and fellow Members can assist you. It will also be used by the Society to relay information on Society Matter's and deadlines. Follow this link:-  
[https://www.facebook.com/groups/174947670088252/?ref=pages\\_profile\\_groups\\_tab&source\\_id=1623019697976720](https://www.facebook.com/groups/174947670088252/?ref=pages_profile_groups_tab&source_id=1623019697976720)



## **GRASSROOTS – PEDEWEB**

**The Society has been using the Grassroots system for a few year's, but it has been for Society use only. It has proved valuable in being able to record Members information and to register sheep correctly etc. The Working Committee have decided to move forward again and upgrade the system which will allow you, the Members to access it. Do not worry, if you are not computer literate you can still do everything by pen and paper! However, if you prefer 'online' then please read on.**

**All Members will be issued with their own individual password – you will receive an Email in due course with this.**

**There will be/is a link on the Society's website to the Grassroots Page. Here you will enter your individual password.**

**From this online page you will then be able to:-**

- **Register any stock**
- **Enter the Flock Competition**
- **Enter the Society's Show & Sale**
- **Book for the AGM/Flock Visit**
- **Order your Calendar**

**and anything else that will crop up from time to time!!**

**Here is a link to the instructions issued by Grassroots on how to do things [http://home.grassroots.co.uk/workspace/pdfs/pedeweb-user-guide-2019\\_1.pdf](http://home.grassroots.co.uk/workspace/pdfs/pedeweb-user-guide-2019_1.pdf) . This is also available on their website and will be on our website also as a reference guide.**

**Please bear with us as we set this up. Please also note that for the Members who have not 'tidied' up their Grassroots flock, you may have a lot of sheep on the system that you no longer have. You may wish to tidy this up which will make the registration process much easier.**

**Anything that you enter on the Grassroots system is not deemed as being 'done' until payment has been received. Therefore, anything you register/book will be held as 'pending' until payment has been received either by cheque or online.**